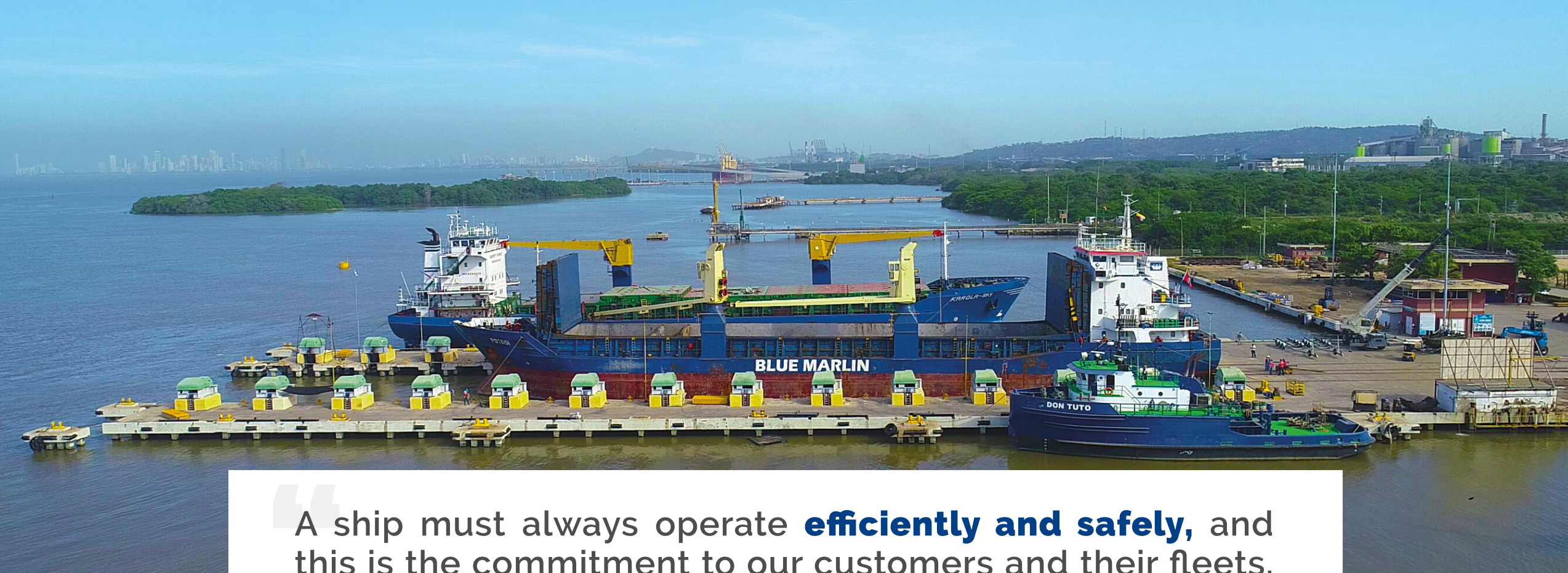




REPAIR AND MAINTENANCE OF NAVAL AND COMMERCIAL VESSELS

#WeKeep*MovingForward*



A ship must always operate **efficiently and safely**, and this is the commitment to our customers and their fleets, through conversion, overhauling and reempowerment.

SERVICES

WORK ON MECHANICAL SYSTEMS

- Maintenance and repair of controllable pitch and fixed pitch propeller lines.
- Maintenance of azimuth-based and Voith- Schneider propulsion systems.
- Disassembly, assembly, servicing and repair of steering systems.
- Laser axis verification and alignment.
- Maintenance of hydraulic systems.
- Valve testing on 250 and 700 bar test benches.
- Disassembly, assembly and maintenance of heat exchangers.
- Repair and maintenance of air conditioning and heating systems.

BLASTING AND PAINTING

- Surface preparation with sandblasting, hydroblasting, gritblasting and water jetting (44,000 psi).
- Conventional and siliconbased paint schemes.
- Surface preparation and tank painting.

ELECTRICITY

- Maintenance and repair of low voltage AC and DC single and three phase electric motors.
- Maintenance and repair of electric generators.
- Maintenance and repair of transformers and converters.

ELECTRONICS

- Electronic equipment integration.
- Propulsion control.
- Sensor assembly and maintenance.

DIESEL ENGINES

- Maintenance and Overhaul of MTU, DETROIT, CATERPILLAR, CUMMINS, WÄRTSILÄ, MAN and DEUTZ Engines.
- Test bench (dynamometer) up to 2,000 hp
- Vibration measurement and testing

WELDING AND TESTING

- Hull repairs in steel, aluminum and stainless steel
- Repair of McGregor type cargo hold covers
- Construction, manufacture and revamping of pipes
- Ultrasound thickness measurement.





FACILITIES



MAMONAL FACILITY

Syncrolift System

Length: **120 m**

Beam: **5,8 m**

Berths: **4**

Lifting capacity: **3600 t**

Draft: **22 m**

Dry-dock positions: **9**

BOCAGRANDE FACILITY

Slipway System

Length: **66,5 m**

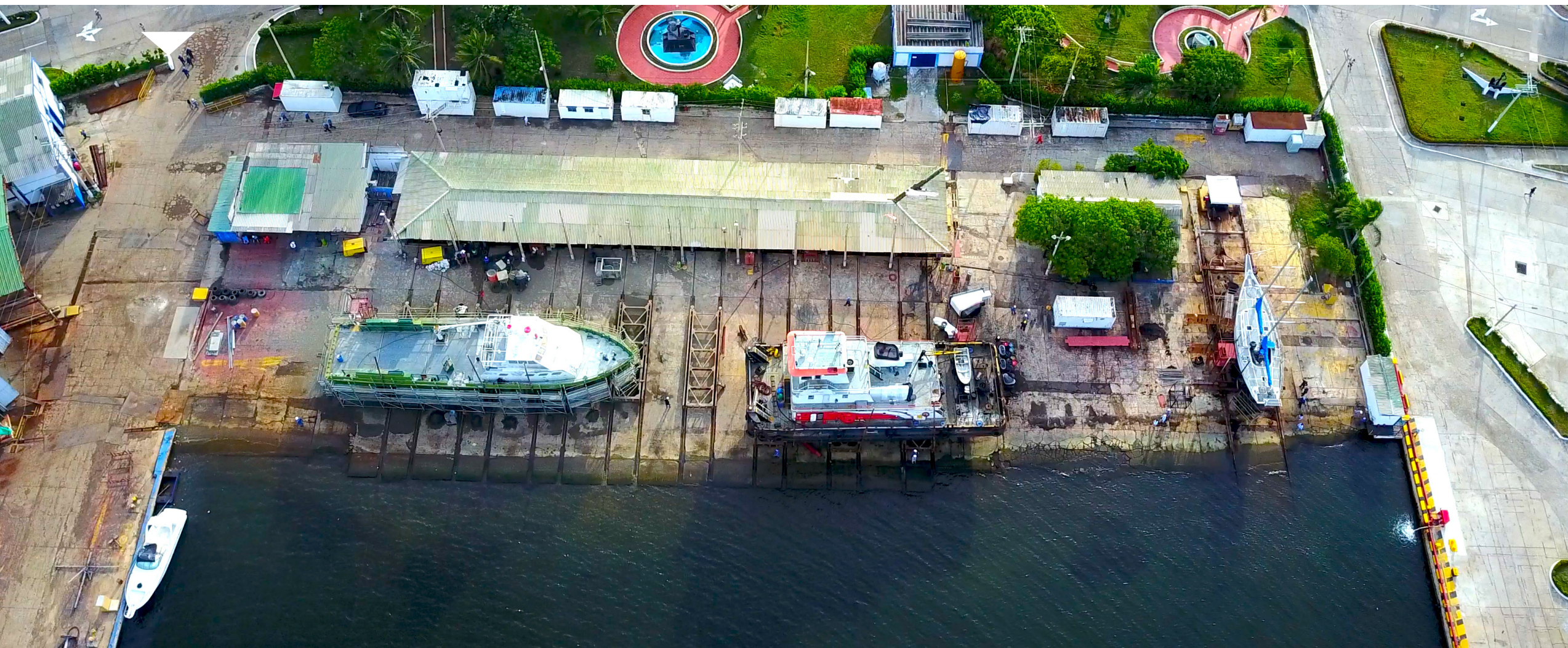
Beam: **4,3 m**

Berths: **3**

Lifting capacity: **1200 t**

Draft: **14 m**

Dry-dock positions: **2**





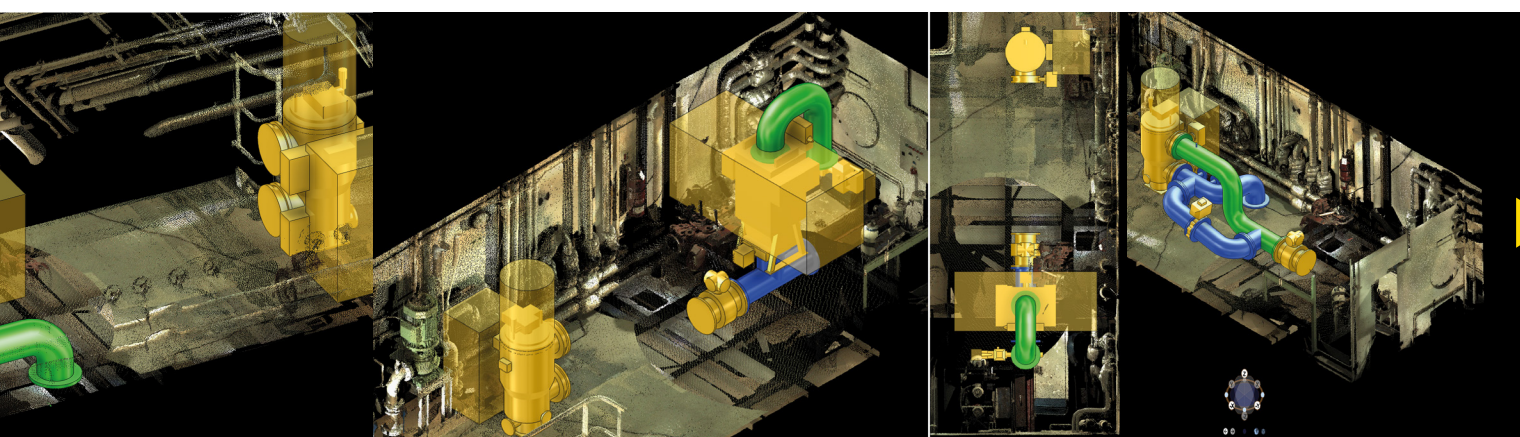
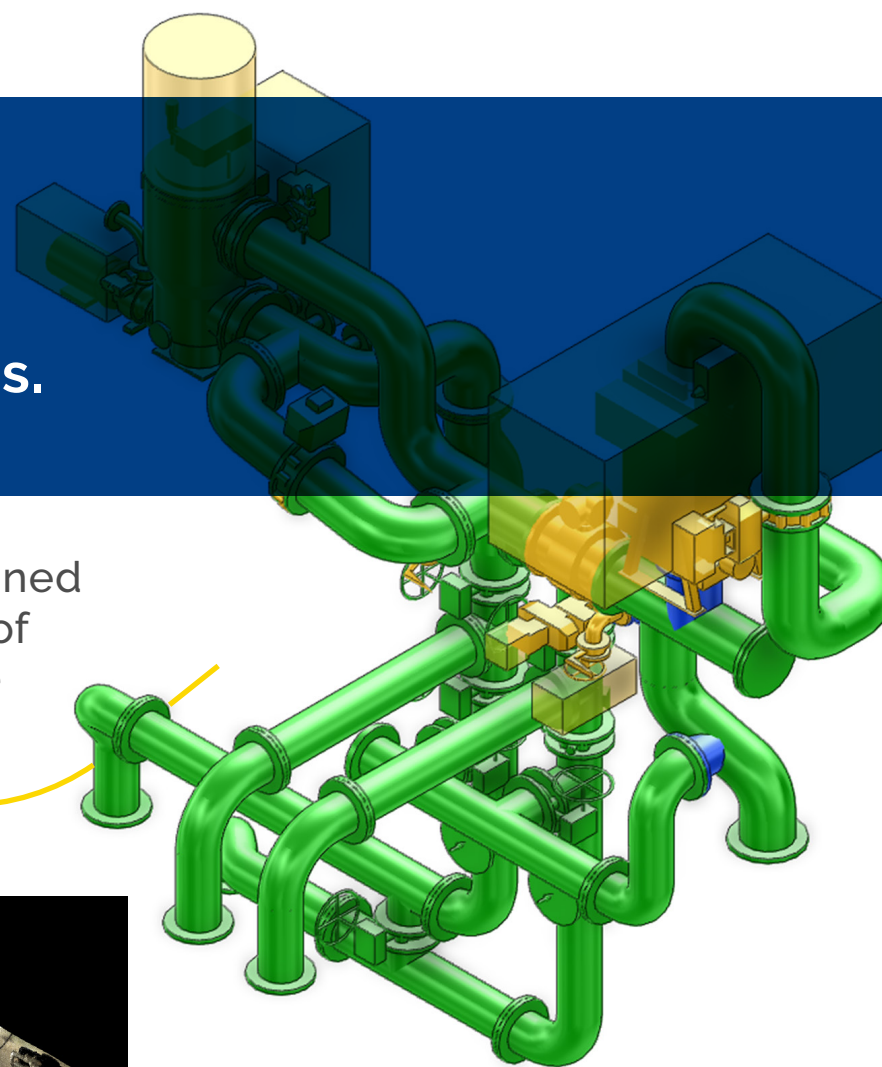
We specialize in overhaul and revamping for tuna-type vessels:



- Steel in tanks
- Thermal insulation and polyurethane
- Manufacture and installation of coils
- Maintenance of motors and generators
- Conveyor belt
- Prefabricated or traditional woodwork
- High scope works on pipes, winches, davits and fishing systems
- Vessel design modifications and functionality changes
- Mechanical protection for main piping systems
- Design and installation of electrical systems

We design basic and detail engineering projects for ballast water treatment systems (BWTS) approved by IACS Classification Societies.

3D scale modeling with the vessel's engine room scanned models enables the routing of pipes and the drafting of construction drawings for their implementation on the vessel without affecting its operations.



▶ Shipowners and Engineers can anticipate the system's final location and check available spaces for maintenance and crew transit.

iDo not hesitate to contact us!

We are able to transform your needs into **solutions.**



Aura Quiroz

Repair and Maintenance

Sales Manager

aquiroz@cotecmar.com

+57 316 248 8131

